

DRAWING NUMBER SHEET TITLE REVISION NUMBER

PP-1.0	Stage 1 Street Trees - Overall Planting + Schedules	6
PP-1.1	Stage 1 Street Trees- Detail Planting Plan 1	6
PP-1.2	Stage 1 Street Trees - Detail Planting Plan 2	6
PP-1.3	Stage 1 Tree pit detail	2

REV.	DESCRIPTION.	DATE.
	LANDSCAPE APPROVAL	28/05/21
01	TREE SPECIES SUBSTITUTION DUE TO DECREASED BERM WIDTH	04/06/21
02	TREE SPECIES SUBSTITUTION	11/06/21
03	TREE PIT LOCATIONS UPDATED	20/07/21
04	NCR - TREE PITS SHIFTED TO ACCOMODATE DRIVEWAY LOCATIONS	27/09/21
05	NCR - TREE PIT LOCATION FOR LOT 1133	19/11/21
06	NCR - TREE PIT LOCATIONS, REPLACEMENTS AND TREE REMOVAL	19/09/22



1 Location Plan
Scale: DNS

Christchurch City Council
ACCEPTED
RMA/2020/1438 Stage 1
 Meadowlands Street Tree Planting
 Planting Plans NCR08
 Cover Sheet
 Sarah Peddie, Technical Services & Design
 Monday 3 October, 2022

NCR ISSUE



SURFACES

- PLANTING AREA - SEE SEPERATE DRAWING SET
- TREE PIT - SEE DETAIL

UTILITIES/SERVICES

- INDICATIVE STREET LIGHT LOCATION
- STORMWATER
- WATER SUPPLY
- SEWERAGE

PLANT IMAGERY

Malus 'Strathmore' Pyrus calleryana 'Candelabra' Sorbus aria 'lutescens'

NORTH:

COPYRIGHT: MORGAN + POLLARD LTD
DO NOT SCALE OFF THE DRAWING
CONTRACTOR MUST VERIFY ALL DIMENSIONS ON SITE BEFORE COMMENCING WORK
CONTRACTOR TO VERIFY ALL UNDERGROUND SERVICES BEFORE COMMENCING WORK

REVISIONS:

No:	Revision:	Date:

LEGEND

- Old Tree pit location
- Tree relocated
- Tree removed

**Christchurch City Council
ACCEPTED**
RMA/2020/1438 Stage 1
Meadowlands Street Tree Planting
Planting Plans MCR08
Sheet PP-1.0
Sarah Peddie, Technical Services & Design
Monday 3 October, 2022

morgan+pollard
Landscape Architecture
Morgan + Pollard - Landscape Architecture
309 Trents Road, RD6 Christchurch 7676
P: 03 349 8228
www.morgan-pollard.co.nz

CLIENT:
DANNE MORA HOLDINGS LIMITED

PROJECT:
MEADOWLANDS

DWG TITLE:
DETENTION BASIN - OVERALL PLANTING PLAN

DESIGNED BY: **M+P** SCALE @ A3:
DRAWN BY: **FM** 1:1000
REVIEWED BY: **CS** DATE: 19/09/22

JOB NO: **1098** DWG NO: **PP-1.0** REVISION: **06**
ISSUED FOR: **APPROVAL**

Stage 1 - Street tree planting

ID	Qty	Latin Name	Common Name	Scheduled Size	Remarks
MAL STR	2	Malus 'Strathmore'	Flowering Crabapple	25L-45L	
PYR CAN	11	Pyrus calleryana 'Candelabra'	Ornamental Pear	25L-45L	
SOR LUT	24	Sorbus aria 'lutescens'	Golden Whitebeam	25L-45L	

General Notes

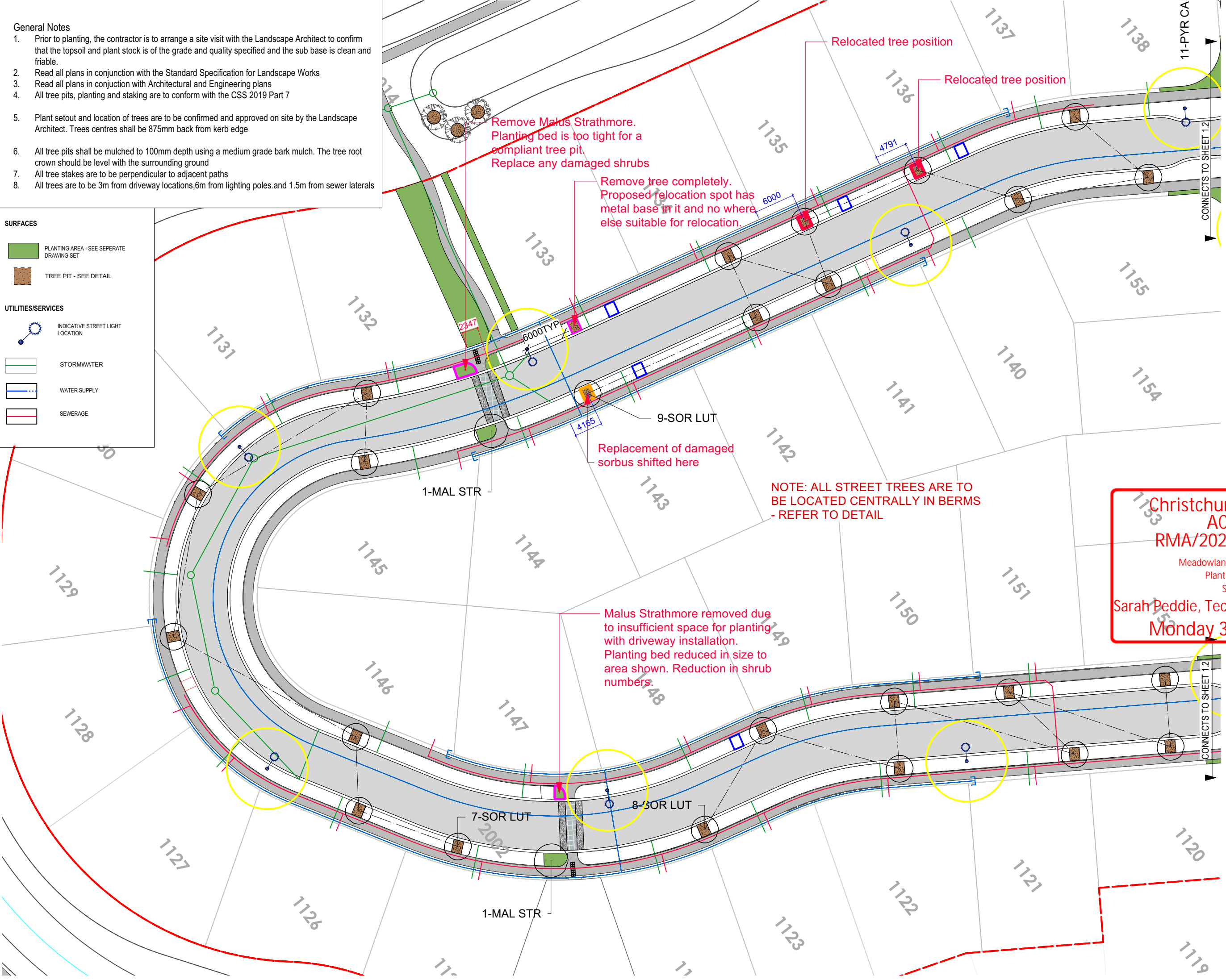
1. Prior to planting, the contractor is to arrange a site visit with the Landscape Architect to confirm that the topsoil and plant stock is of the grade and quality specified and the sub base is clean and friable.
2. Read all plans in conjunction with the Standard Specification for Landscape Works
3. Read all plans in conjunction with Architectural and Engineering plans
4. All tree pits, planting and staking are to conform with the CSS 2019 Part 7
5. Plant setout and location of trees are to be confirmed and approved on site by the Landscape Architect. Trees centres shall be 875mm back from kerb edge
6. All tree pits shall be mulched to 100mm depth using a medium grade bark mulch. The tree root crown should be level with the surrounding ground
7. All tree stakes are to be perpendicular to adjacent paths
8. All trees are to be 3m from driveway locations, 6m from lighting poles and 1.5m from sewer laterals

SURFACES

- PLANTING AREA - SEE SEPERATE DRAWING SET
- TREE PIT - SEE DETAIL

UTILITIES/SERVICES

- INDICATIVE STREET LIGHT LOCATION
- STORMWATER
- WATER SUPPLY
- SEWERAGE



NORTH:

COPYRIGHT: MORGAN + POLLARD LTD
DO NOT SCALE OFF THE DRAWING
CONTRACTOR MUST VERIFY ALL DIMENSIONS ON SITE BEFORE COMMENCING WORK
CONTRACTOR TO VERIFY ALL UNDERGROUND SERVICES BEFORE COMMENCING WORK

REVISIONS:

No:	Revision:	Date:

LEGEND

- Old Tree pit location
- Tree relocated
- Tree removed

**Christchurch City Council
ACCEPTED**
RMA/2020/1438 Stage 1

Meadowlands Street Tree Planting
Planting Plans MCR08
Sheet PP-1.1

Sarah Peddie, Technical Services & Design
Monday 3 October, 2022

morgan+pollard
Landscape Architecture

Morgan + Pollard - Landscape Architecture
309 Trents Road, RD6 Christchurch 7676
P: 03 349 8228
www.morgan-pollard.co.nz


CLIENT:
DANNE MORA HOLDINGS LIMITED

PROJECT:
MEADOWLANDS

DWG TITLE:
DETENTION BASIN - OVERALL PLANTING PLAN

DESIGNED BY: **M+P** SCALE @ A3:
DRAWN BY: **FM** 1:1000
REVIEWED BY: **CS** DATE: 19/09/22

JOB NO: 1098 DWG NO: PP-1.1 REVISION: 06
ISSUED FOR: **APPROVAL**




NORTH: 

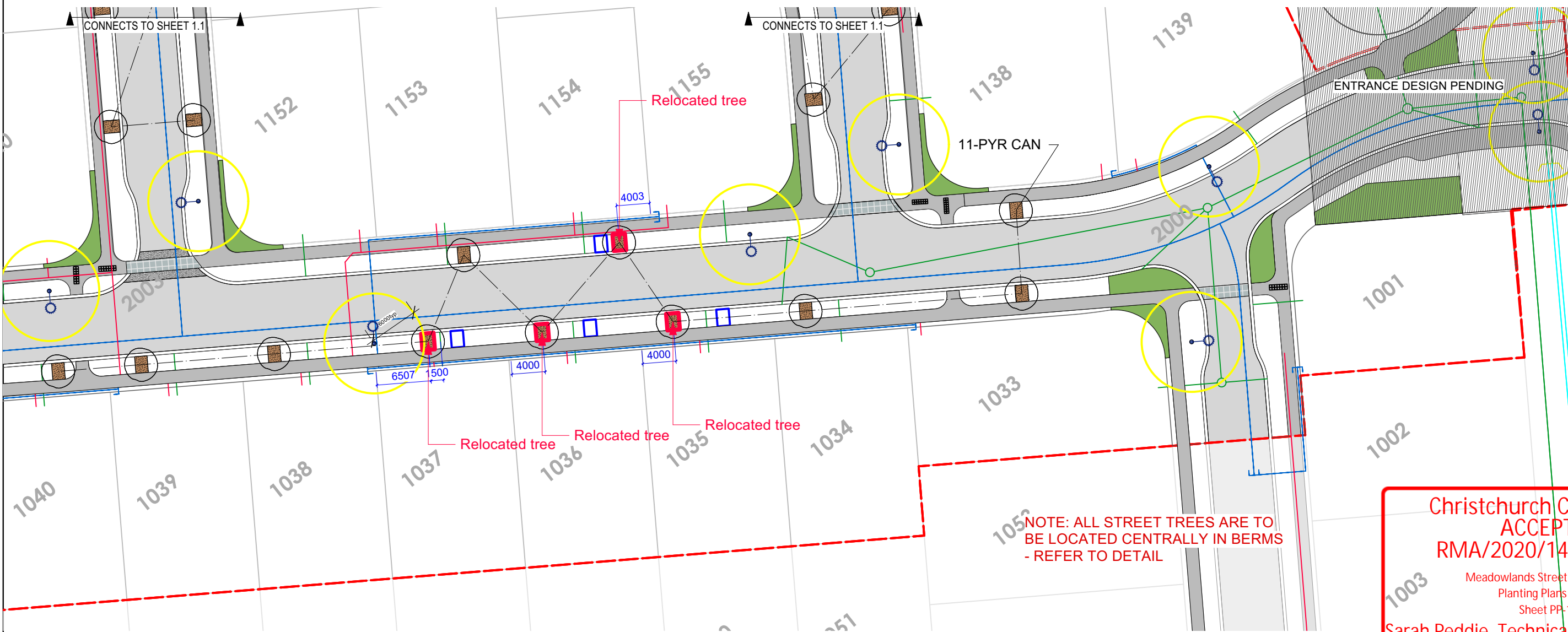
COPYRIGHT: MORGAN + POLLARD LTD
 DO NOT SCALE OFF THE DRAWING
 CONTRACTOR MUST VERIFY ALL DIMENSIONS ON SITE BEFORE COMMENCING WORK
 CONTRACTOR TO VERIFY ALL UNDERGROUND SERVICES BEFORE COMMENCING WORK

REVISIONS:

No:	Revision:	Date:



LEGEND

-  Old Tree pit location
-  Tree relocated
-  Tree removed



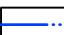
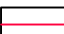


Christchurch City Council
ACCEPTED
RMA/2020/1438 Stage 1
 Meadowlands Street Tree Planting
 Planting Plans NCR08
 Sheet PP-1.2
 Sarah Peddie, Technical Services & Design
 Monday 3 October, 2022


SURFACES

-  PLANTING AREA - SEE SEPERATE DRAWING SET
-  TREE PIT - SEE DETAIL

UTILITIES/SERVICES

-  INDICATIVE STREET LIGHT LOCATION
-  STORMWATER
-  WATER SUPPLY
-  SEWERAGE

- General Notes**
- Prior to planting, the contractor is to arrange a site visit with the Landscape Architect to confirm that the topsoil and plant stock is of the grade and quality specified and the sub base is clean and friable.
 - Read all plans in conjunction with the Standard Specification for Landscape Works
 - Read all plans in conjunction with Architectural and Engineering plans
 - All tree pits, planting and staking are to conform with the CSS 2019 Part 7
 - Plant setout and location of trees are to be confirmed and approved on site by the Landscape Architect. Trees centres shall be 875mm back from kerb edge
 - All tree pits shall be mulched to 100mm depth using a medium grade bark mulch. The tree root crown should be level with the surrounding ground
 - All tree stakes are to be perpendicular to adjacent paths
 - All trees are to be 3m from driveway locations, 6m from lighting poles and 1.5m from sewer laterals


 Landscape Architecture

Morgan + Pollard - Landscape Architecture
 309 Trents Road, RD6 Christchurch 7676
 P: 03 349 8228
 www.morgan-pollard.co.nz

CLIENT:
DANNE MORA HOLDINGS LIMITED

PROJECT:
MEADOWLANDS

DWG TITLE:
DETENTION BASIN - OVERALL PLANTING PLAN

DESIGNED BY: **M+P** SCALE @ A3:
 DRAWN BY: **FM** 1:1000
 REVIEWED BY: **CS** 19/09/22

JOB NO: **1098** DWG NO: **PP-1.2** REVISION: **06**
 ISSUED FOR: **APPROVAL**

NORTH:

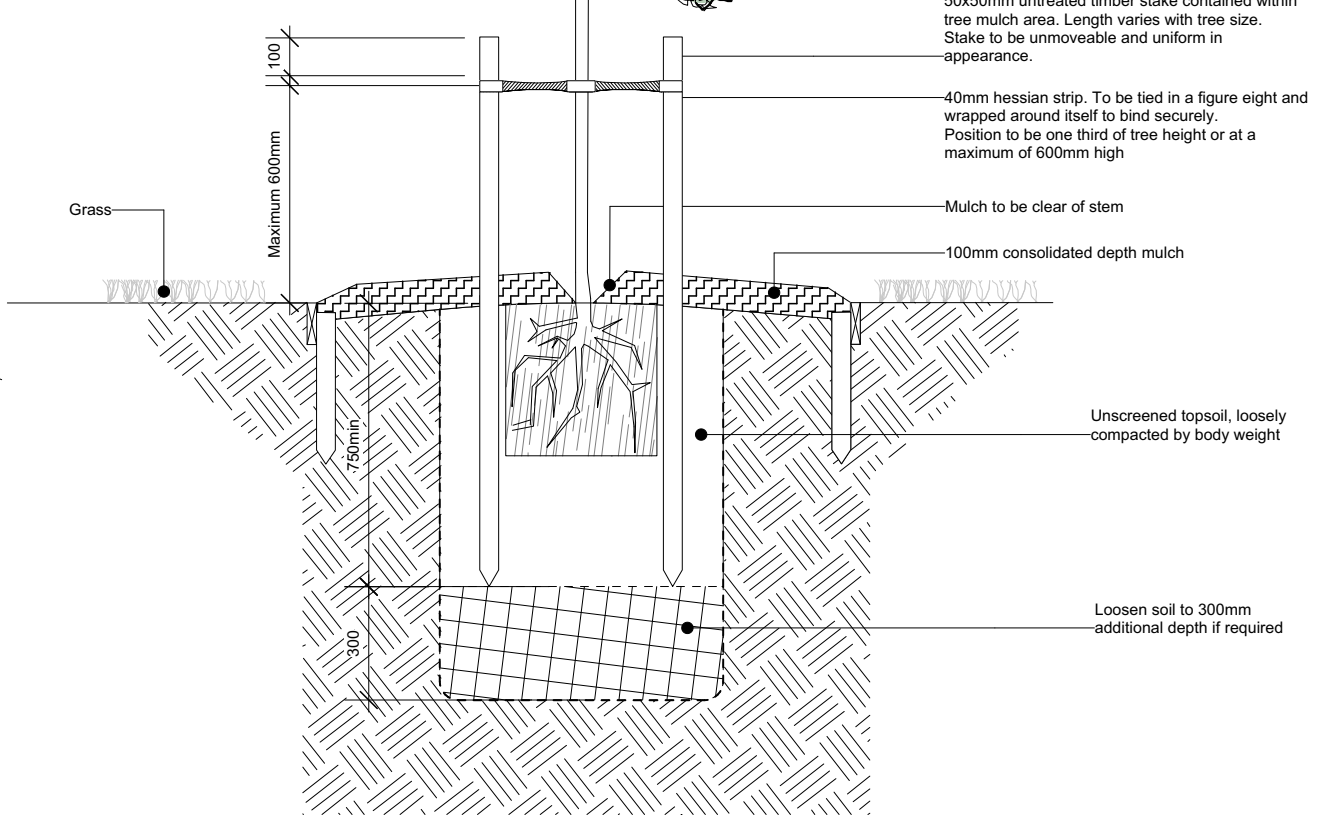
COPYRIGHT: MORGAN + POLLARD LTD
DO NOT SCALE OFF THE DRAWING
CONTRACTOR MUST VERIFY ALL DIMENSIONS ON SITE BEFORE COMMENCING WORK
CONTRACTOR TO VERIFY ALL UNDERGROUND SERVICES BEFORE COMMENCING WORK

REVISIONS:

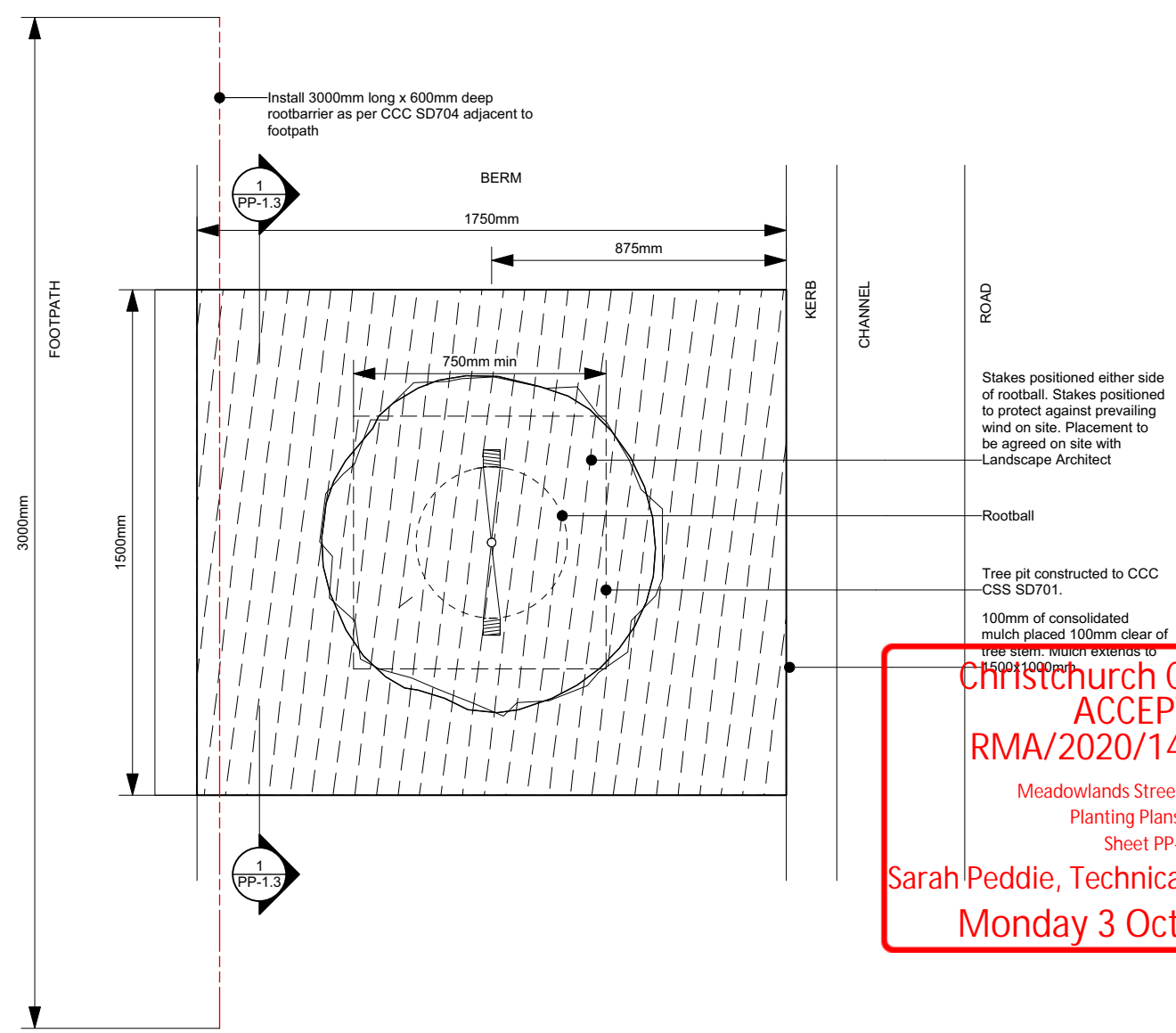
No:	Revision:	Date:



NOTE: ROOTBARRIER TO BE INSTALLED ADJACENT TO FOOTPATH



1 TREE PIT
Scale: 1:20



2 TREE PIT - PLAN VIEW
Scale: 1:20

Christchurch City Council
ACCEPTED
RMA/2020/1438 Stage 1
Meadowlands Street Tree Planting
Planting Plans NCR08
Sheet PP-1.3
Sarah Peddie, Technical Services & Design
Monday 3 October, 2022

morgan+pollard
Landscape Architecture
Morgan + Pollard - Landscape Architecture
309 Trents Road, 1806 Christchurch 7676
P: 03 349 8228
www.morgan-pollard.co.nz

CLIENT:
DANNE MORA HOLDINGS LIMITED

PROJECT:
MEADOWLANDS

DWG TITLE:
STAGE 1 TREE PIT DETAILS

DESIGNED BY: M+P	SCALE @ A3:
DRAWN BY: FM	AS SHOWN
REVIEWED BY: CS	DATE: 20/07/21

JOB NO: 1098	DWG NO: PP-1.3	REVISION: 02
ISSUED FOR: APPROVAL		